



MAINTENANCE INFORMATION

MI17-22

| | | | |
|---|---------------|-----------|---------|
| DATE : | December 2017 | SECTION : | 18 BODY |
| SUBJECT: YEARLY INSPECTION OF FUEL TANK CRADLE MOUNTING SCREWS | | | |

DESCRIPTION

Prevost recommends a yearly inspection of the fuel tank cradle mounting screws. Replace hardware as required.

Where applicable, make sure safety recall [SR17-28](#) has been performed prior to inspection.

| INSPECTION OF FUEL TANK CRADLE MOUNTING SCREWS | |
|---|-------------|
| DESCRIPTION | FREQUENCY |
| Perform hardware inspection and replacement as described in this document | Once a year |

APPLICATION


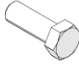


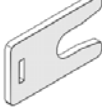
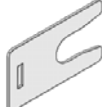
| Model | VIN |
|--|--|
| H3-41, H3-45 coaches Model Year: 2009 - Current | Individual vehicle 2PCH33494 <u>9</u> C711 <u>1386</u> And from 2PCH33492 <u>9</u> C711 <u>1404</u> up to Current Model Year. |
| H3-45 VIP motorhomes Model Year: 2009 - Current | From 2PCV33492 <u>8</u> C711 <u>1405</u> up to Current Model Year |
| X3-45 coaches Model Year: 2011 - Current | <i>Canadian-Built vehicles:</i> Individual vehicle 2PCG33499 <u>B</u> C72 <u>9965</u> From 2PCG33491 <u>B</u> C73 <u>5002</u> up to Current Model Year |
| | <i>US-Built vehicles:</i> From 4RKG33495 <u>F</u> 973 <u>7000</u> up to Current Model Year. |
| XLII-45 Entertainer Model Year: 2011 - 2013 | From 2PCY33498 <u>B</u> C73 <u>5003</u> up to 2PCYS3498 <u>D</u> C73 <u>5489</u> . |
| X3-45 VIP motorhomes Model Year: 2012 - Current | From 2PCBS3499 <u>C</u> C73 <u>5070</u> up to Current Model Year |

| Model | VIN |
|--|---|
| X3-45 VIP commercial use Model Year: 2014 - Current | From 2PCCS3497 <u>E</u> C73 <u>5494</u> up to Current Model Year. |
| X3-45 Commuter Model Year: 2017 - Current | From 4RKJ33498 <u>H</u> 973 <u>7386</u> up to Current Model Year |



MATERIAL

The following material may be required depending on vehicle condition.

| Part No. | Description | Qty |
|--|---|-----|
| 5001941  | SCREW CAP HEX N500 M12X1.75X120 G10.9 | A/R |
| 500806  | SCREW CAP HEX M12-1.75X35 G10.9 G500 | A/R |
| 500811  | NUT HEX STO N500 M12-1.75 G10 | A/R |
| 500958  | FLAT WASHER SS .531X1.062X.095 (M12, 1/2) | A/R |
| 030082  | SHIM U 3.175MM | A/R |
| 030083  | SHIM U 0.953MM | A/R |

NOTE

Material can be obtained through regular channels.

PROCEDURE



DANGER

Park vehicle safely, apply parking brake, stop engine. Prior to working on the vehicle, set the ignition switch to the OFF position and trip the main circuit breakers equipped with a trip button. On Commuter type vehicles, set the battery master switch (master cut-out) to the OFF position.

1. Raise vehicle with safe lifting equipment and procedures.



Figure 1: Fuel tank cradle location under vehicle

2. Place jack stands under the fuel tank cradle.



Figure 2: Jack Stands

3. Locate the mounting points of the fuel tank cradle under the vehicle frame (Figure 3)
4. Carefully inspect fuel cradle mounting bolts, 6 locations.(Figure 3)
5. Replace any bolt showing signs of wear by new hardware.

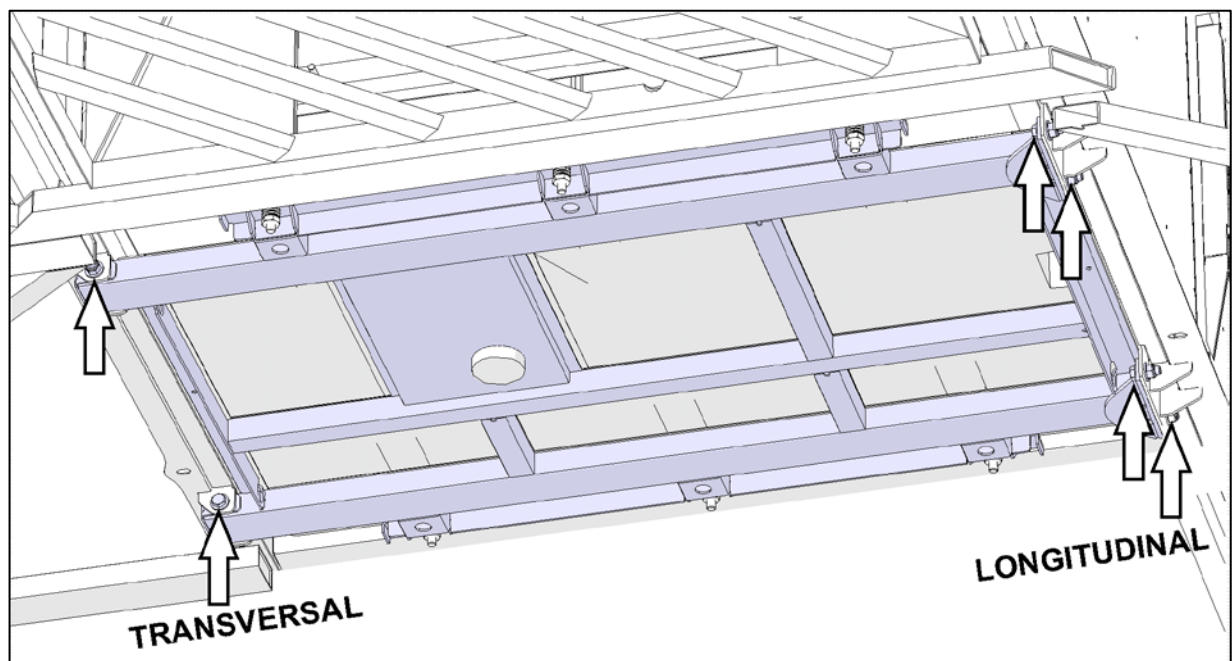


Figure 3 : Location of Mounting Points

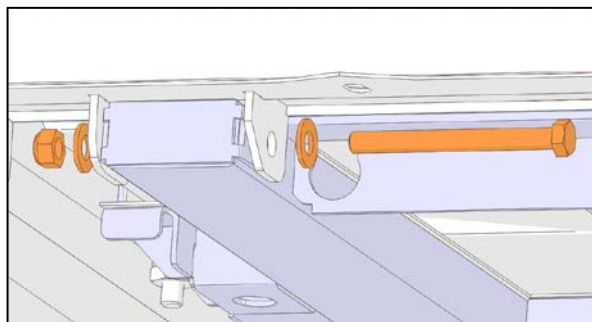


Figure 4 : Transverse Screws, 2 locations

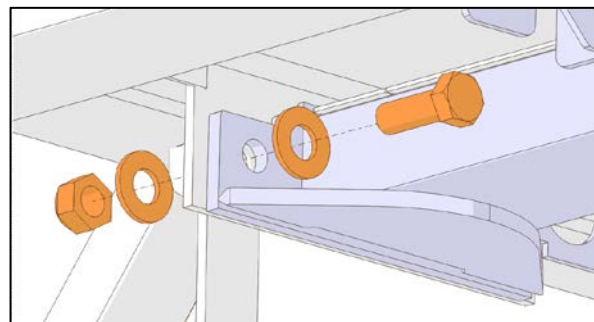


Figure 5 : Longitudinal Screws, 4 locations

6. On the transversal screw joints, (Figure 4) any visible gap between cradle support tubing and vehicle frame mounting lugs is not acceptable. It could indicate safety recall [SR17-28](#) has not been performed on the vehicle.

If it is indeed the case, perform safety recall [SR17-28](#) in priority over this maintenance inspection.

Inspection will then apply yearly afterwards

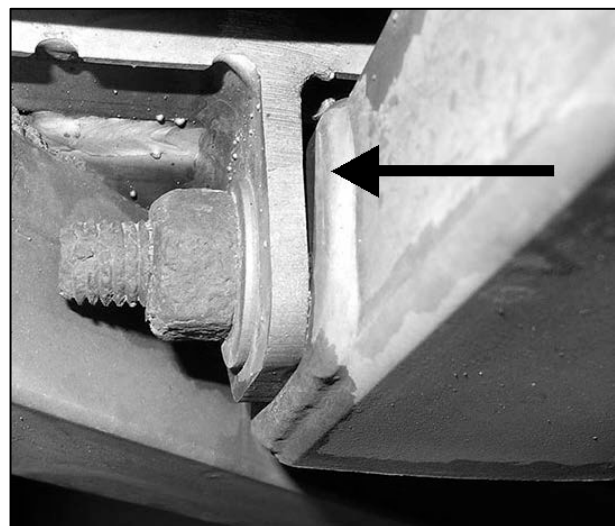


Figure 6 : Visible gap on transversal screw joint

7. If shims are not present, the visible gap should be shimmed using parts 030082 and 030083 as required.
8. Shim arrangement may vary and may be stacked on both sides.

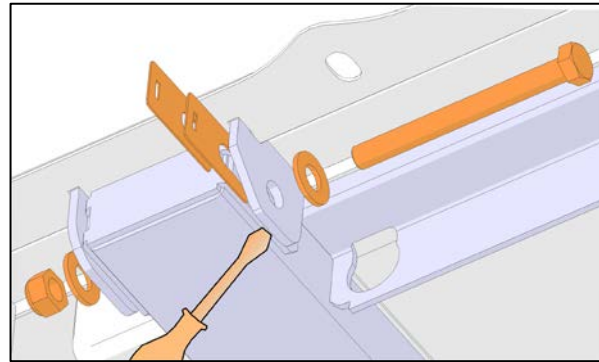


Figure 7 : Shim installation, transverse screw. Arrangement may vary.

NOTE

Do not re-use nuts



CAUTION

Perform replacement one screw location at a time with appropriate support.

9. Tighten to **82 lb-ft**.
10. Apply torque seal mark.

PARTS / WASTE DISPOSAL

Discard according to applicable environmental regulations (Municipal/State[Prov.]/ Federal)